

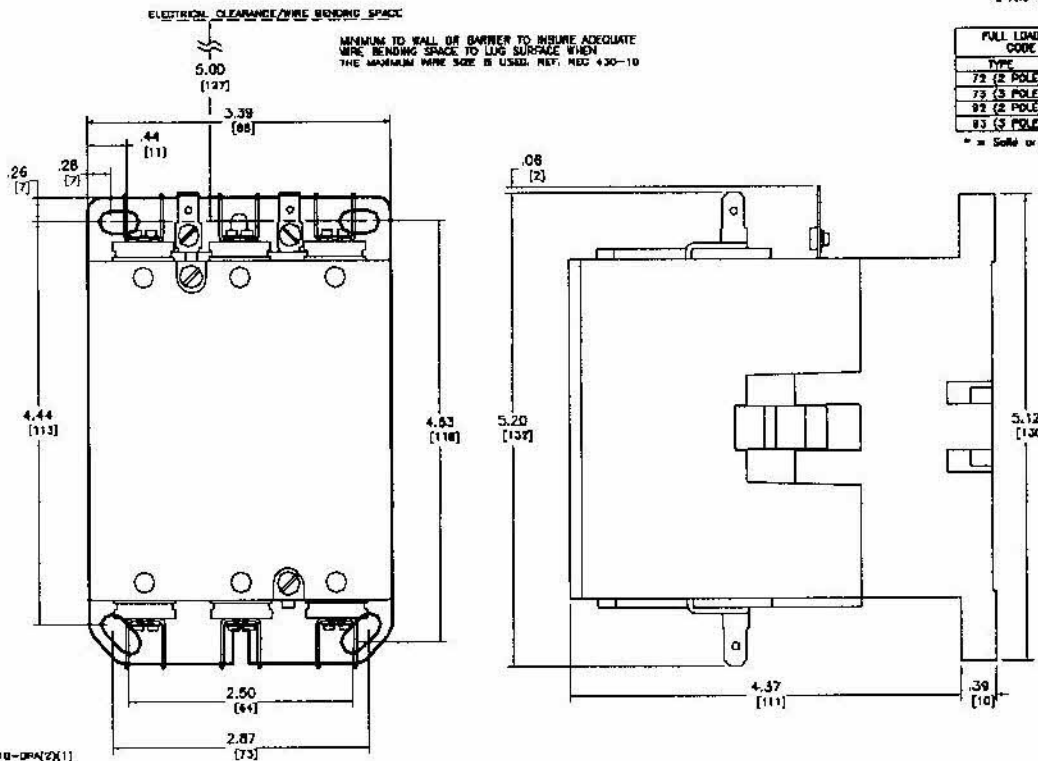
2 AND 3-POLE DEFINITE PURPOSE CONTACTOR
600 VAC, 50-60 HZ

FULL LOAD AMPERES CODE (2)		POWER TERMINALS	
TYPE	FLA	TYPE OF LUG	WIRE SIZES(*) MIN-MAX
72 (2 POLE)	75 FLA	BOX LUG	#14-#10
73 (3 POLE)	75 FLA	BOX LUG	#14-#10
82 (2 POLE)	90 FLA	BOX LUG	#14-#10
83 (3 POLE)	90 FLA	BOX LUG	#14-#10

* = Solid or stranded copper wires only.

COIL VOLTAGE CODE (1)	VOLTAGE	
	50 HZ	60 HZ
V12	24	24
V22	120	110
V24	208-240	220
V26	277	277
V28	480	440
V27	900	550

QUICK CONNECT TERMINALS AND BRIDGE HEAD SCREWS FOR EASY WIRING.



DUAL DIMENSIONS: INCHES
MILLIMETERS

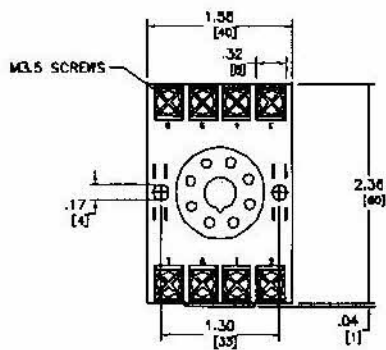
Catalog Number: B910-DPA(2)(1)
 Ratings: SEE CHART
 UL File/CDN: E42240/CDN NLDX2
 CSA File/Class: LR25490/321104
 Meets Standards: -
 Weight: 3.4 LB
 Wire Size: SEE CHART
 Terminal Torque: 60 LB-IN
 Mounting Hnd.: (4) #10 or #8 screws

DEFINITE PURPOSE CONTACTOR (2 AND 3 POLE)
 CLASS B910 TYPE DPA (2) (1)

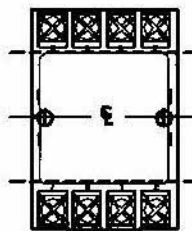


DRWG NO. E0310501-01

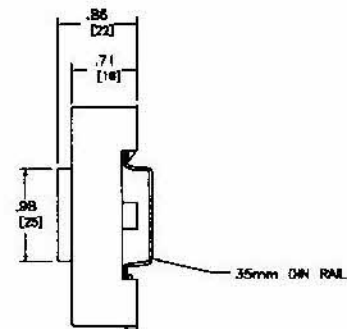
JUNE 2003



FRONT VIEW
 SHOWN WITHOUT RELAY INSTALLED



FRONT VIEW
 SHOWN WITH RELAY INSTALLED



RIGHT VIEW

DUAL DIMENSIONS: INCHES
MILLIMETERS

Catalog Number: B501-NRS1
 Ratings: 300V, 10A
 UL File/CDN: E66924/5wire
 CSA File/Class: LR30144/3211 07
 Meets Standards: -
 Weight: 0.1 lb
 Wire Size: #12-#22 AWG
 Terminal Torque: 7-8 LB-IN
 Mounting Hnd.: (2) #6-32 SCREWS, 35mm DIN RAIL

GENERAL PURPOSE RELAY SOCKET (8 PIN)
 CLASS B501 TYPE NRS1



DRWG NO. E0700301-01

JUNE 2003



SQUARE D Instruction Bulletin

Bulletin No. 30072-005-95

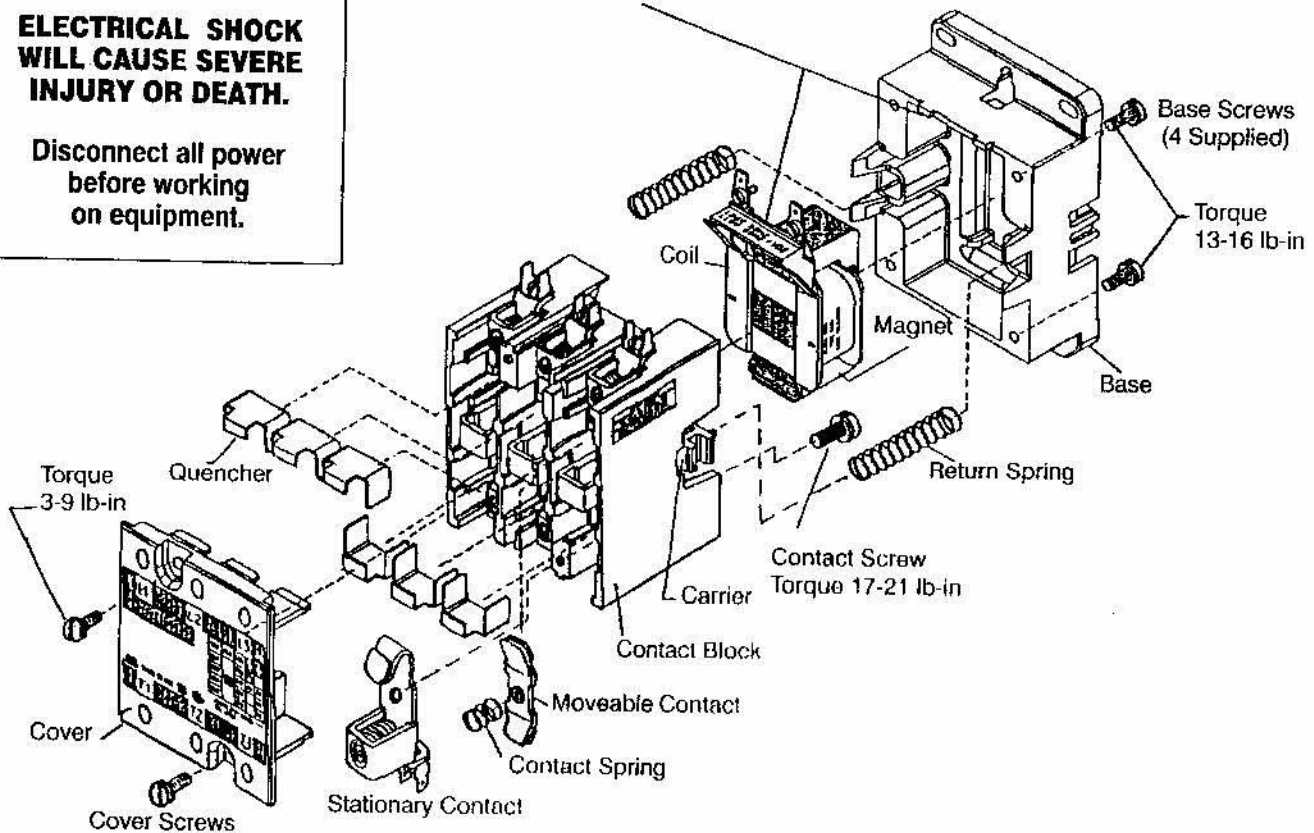
April, 1991

Raleigh, NC U.S.A.

Type DPA 75 & 90 Ampere Definite Purpose Contactors Class 8910

⚠ DANGER
HAZARDOUS VOLTAGE.
**ELECTRICAL SHOCK
WILL CAUSE SEVERE
INJURY OR DEATH.**
Disconnect all power
before working
on equipment.

When reassembling, orient
these details as shown.



⚠ CAUTION
**EQUIPMENT DAMAGE.
MAY RESULT IF CONTACTOR
IS IMPROPERLY MOUNTED OR REASSEMBLED.**
Mount only on vertical surface.
If disassembled, refer to diagram for proper:
Parts installation
Base-to-Coil orientation
Screw torques

Table 1 Contact Replacement Kits

75 Amp	CLASS 9998	TYPE DRC7
90 Amp	CLASS 9998	TYPE DRC9

Each kit contains two (2) stationary contacts, one (1) moveable contact, one (1) contact spring, and two (2) contact screws.



GROUPE SCHNEIDER

MANUFACTURER'S DECLARATION OF CONFORMITY

The undersigned, representing the following manufacturer

manufacturer:	SQUARE D COMPANY
address:	128 Bingham Road Asheville, NC 28802 USA

herewith declares that the product

product identification:	Class 8910 Type DPA Definite Purpose Contactors Class 8911 Type DPS Magnetic Motor Starters Class 8965 Type DPR Reversing Contactors Class 9999 Type D Auxiliary Contact Modules
-------------------------	---

to which this declaration refers are in conformity with the following

Standards or Normative Documents:	- General rules: EN60947.1 - Electromechanical contactors and motor starters: EN60947.4.1 - Electromechanical control circuit devices: EN60947.5.1 - Underwriters Laboratories Inc.: UL508 - Canadian Standards Association: C22.2 SPEC 14
-----------------------------------	--

subject to installation, maintenance and utilization in accordance with their purpose, regulations, current standards, manufacturer's instructions and industry standards, is in conformity with the provisions of the following EC directive(s) (including all applicable amendments):

reference n°	title
73/23/CCE	Low-voltage Directive of February 19, 1973 modified by Directive 93/68/EC of July 22, 1993.
89/336/CEE	Electromagnetic Compatibility Directive of May 3, 1989 modified by Directives 92/31/CEE of April 28, 1992 and 93/68/CEE of July 22, 1993.

The CE marking on the product and/or the packaging signifies that Square D holds the reference technical file available to the European Authorities.

Raleigh, NC

date: March 9, 1998

Authorization Signature

Name: John Gawron
Position: Director, Motor Control

Signature:

ALL DISTRIBUTION OR REPRODUCTION WITHOUT WRITTEN AUTHORIZATION IS FORBIDDEN

■ Federal Pacific ■ Federal Pioneer ■ Merlin Gerin ■ Modicon ■ Square D ■ Telemecanique
Groupe Schneider-North America, 1415 South Roselle Road, Palatine, IL 60067-7399 847-397-2600 Fax 847-925-7500



MANUFACTURER'S DECLARATION OF CONFORMITY

The undersigned, representing the following manufacturer

Document No: R-DOC-8501R-R1

Company:	SQUARE D COMPANY
address:	8001 Highway 64 East Knightdale, NC 27545-9023 USA

Herewith declares that the product

Product identification:	<i>Class 8501 Type RS General Purpose Relays Class 8501 Type KL Latching Relays Class 8501 Type C Power Relays Class 8501 Type N Sockets</i>
-------------------------	--

To which this declaration refers are in conformity with the following:

Standards and/or Normative Documents:	<i>General Rules: EN60947-4-1 Electromechanical control circuit devices: EN60947-5-1</i>
---	--

Subject to installation, maintenance and utilization in accordance with their purpose, regulations, current standards, manufacturer's instructions and industry standards. Meet(s) the provisions of the following EC Directive(s): (Including all applicable amendments)

reference n°	title
<i>73/23/CCE 89/336/CEE</i>	<i>Low-voltage Directive of February 19, 1973 modified by Directive 93/68/EC of July 22, 1993.</i>

The CE marking on the product and/or the packaging signifies that the product is in compliance with the applicable EU Directives.

Raleigh, NC

Date: May 2, 2002

Authorization Signature

Name: John Gawron
Position: Director, Industrial Control Activity

Signature:

