

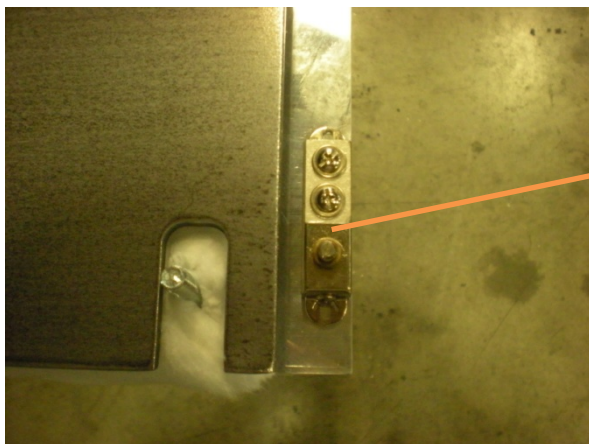
HI TEMPERATURE CUT/OFF T-STAT

INSTALLATION FOR MAXI PRESS MACHINES

The following instructions are on the installation of a bi-metal thermostat to the MAXI-PRESS heater block to be used as a thermal cut-off device. Basically the thermostat is a normally closed device that opens at a certain temperature. Normally it is factory set for approx. 500F. The signal for the coil on the heater contactor relay will be redirected to the cut-off thermostat and then back to the heater contactor relay.

If the heater block plate should reach 500F, the cut-off thermostat will open and the heater contactor relay will open.

1. Remove power from machine.
2. Remove JUST the front half of the black heater block cover.
3. Pull back the yellow/brown fiber glass insulation from the RIGHT FRONT side of the heater block. You need to see extreme RIGHT FRONT SIDE of the aluminum plate.
4. Place the cut-off thermostat on the aluminum as shown on picture.

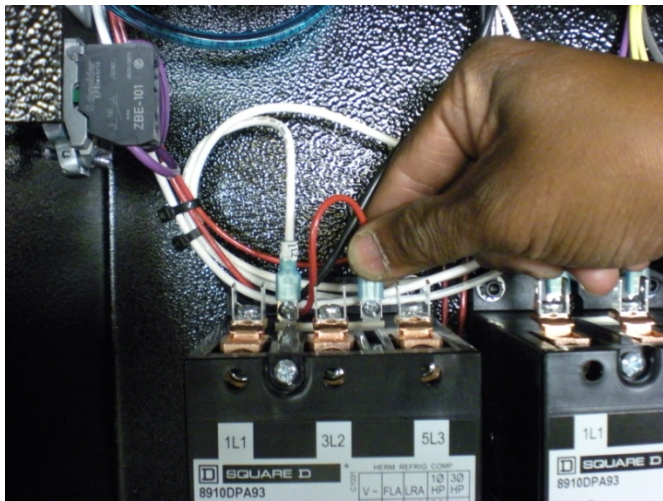


CUT-OFF
THERMOSTAT

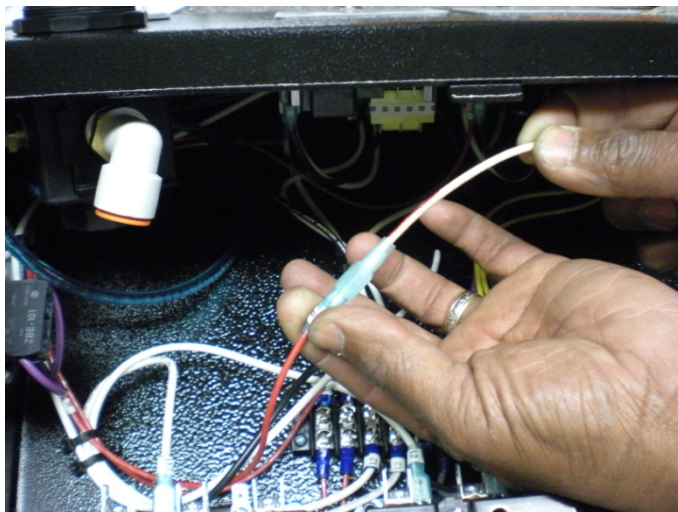
5. Mark the hole locations in the cut-off thermostat on to the aluminum plate.
6. Drill 2 (6-32) tapped holes approx.. 3/8" deep. DO NOT DRILL TO DEEP, OR YOU WILL GO THROUGH the heater block plate.



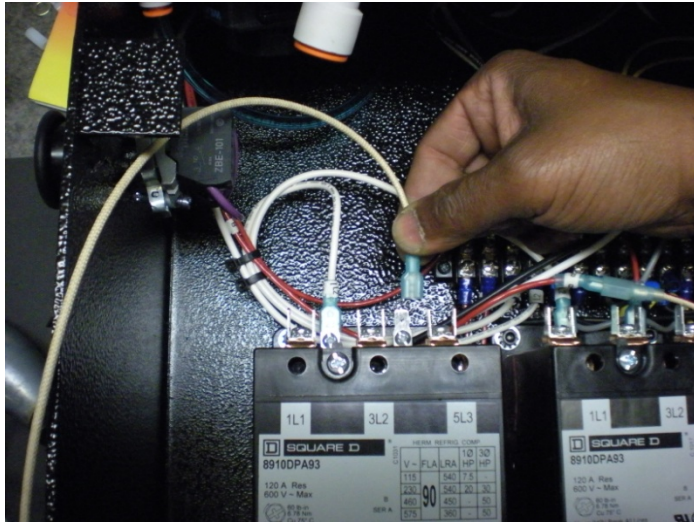
7. Attach thermostat to the heater block using the (2) 6-32 screws that were supplied.
8. Carefully work the wires that are connected to the thermostat over towards the BLACK JUNCTION BOX attached to the rear half of the heater block cover. Bring the two wires up into the junction box.
9. Replace the fiber glass insulation blanket material and re-attach heater block cover.
10. Remove the top cover on the black main control console.
11. Locate the HEATER CONTACTOR RELAY attached the bottom of the console.
12. Remove the RED wire connected to the coil of the heater relay as shown in picture.



13. Connect the wire with the MALE connector on the end with RED marked on it to the RED wire that was removed from the coil of the heater relay. As shown



14. Connect the wire with the FEMALE connector on the end to the metal male tab on the heater relay contactor coil. As shown



15. Pass the two new wires you just attached into the large grey flexible liquidtight conduit in the back of the console. These two wires you need to snake down to the junction box mounted on the heater block cover.

16. With the two wires coming up from the cut-off thermostat and the two wires coming down from the control console, connect them together. (It does not matter which wire is connected to which) We have included in the kit fully insulated MALE and FEMALE terminals for this connection.

17. Once the cut-off thermostat is in place and wired, the machine should operate normally. Only when the heater block reaches or exceeds 500f does the cut-off thermostat activate. The cut-off thermostat will reset automatically once the temperature drops.

PLEASE CALL THE FACTORY IF YOU HAVE ANY PROBLEMS

1-800-525-6766